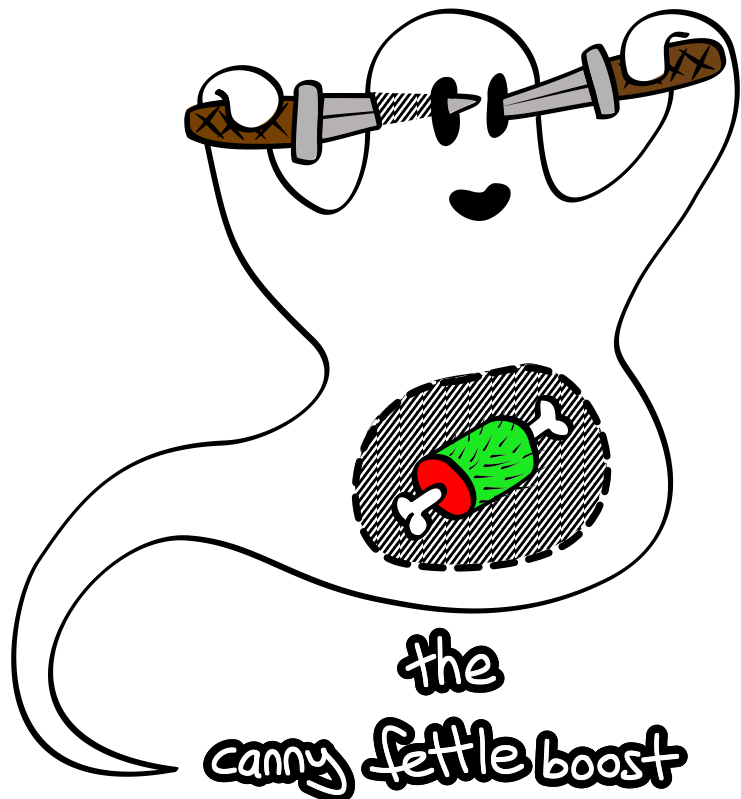


Champion Leccy



**BROAD RANGE
BOOSTORTION**

The Canny Fettle Boost

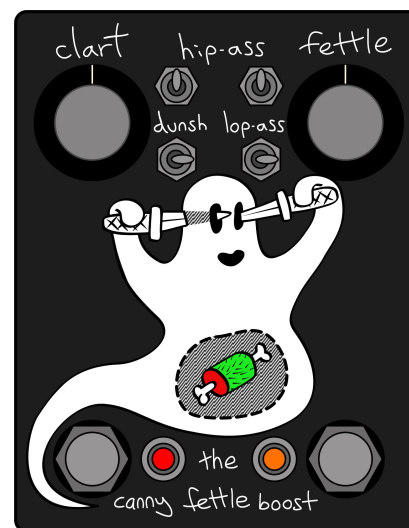
The Canny Fettle Boost is a super broad ranging gain pedal that is simple to use, and spans every level of dirt from tasteful clean boost to distort-o-fuzz. This 'Canny' version is an expanded take on the original Fettle Boost circuit.

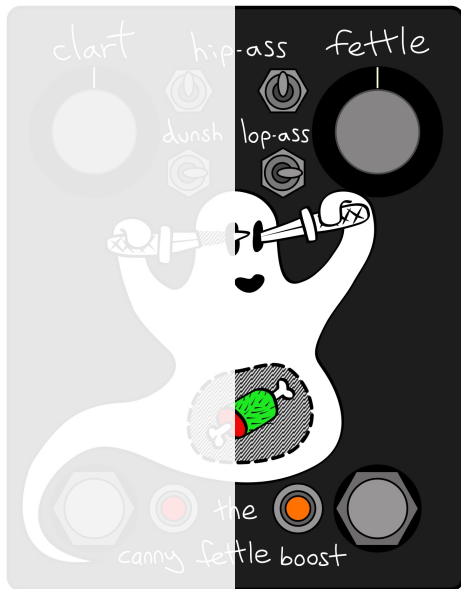
The right hand side (Fettle) is a tastefully voiced JFET drive.

The left hand side (Clart) is a single transistor gain stage that goes from clean boost to full on nasty distortion.

In the original Fettle Boost, the 'Fettle' is always on and the 'Clart' is accessed by a small toggle.

This expanded version, with its two independent foot switches offers 3 different drive sounds from one pedal (just Fettle/ just Clart/ both).





Fettle side

Fettle* - gain knob

Hip ass** - bass response switch. This control helps you to find your place in the mix.
Down - full bottom end
Middle - slight bass cut
Up - treble boost

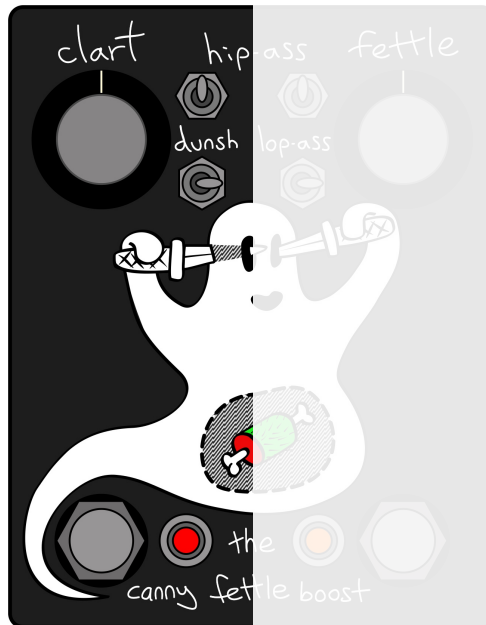
Lop-ass** - treble cut switch. This control helps you control the brightness of your signal.
Left - no cut
Middle - slight treble cut
Right - heavy treble cut

Clart side

Clart - volume knob

Hip ass** - bass response switch. Does the same thing as the hip-ass switch next to it (details above)

Dunsh** - gain boost switch. Increases gain, sustain and bottom end. Before you flick this switch it might be a good idea to turn the clart knob down. The difference in gain is significant!
Left - no dunsh
Middle - a little dunsh
Right - full dunsh



* this pot will crackle when you turn it, that's normal.

** there might be a popping sound if you flick these switches when the pedal is on.

Technical stuff

The 'Fettle' knob biases the JFET to alter the gain. So you will hear some crackling sounds when you turn it. That's the sound of the electrons being pushed and pulled around. It will stop when you stop turning the knob. It's perfectly normal, so don't worry.

The 'Fettle' side of the pedal has an internal trim pot for volume. It is turned down so that the external Fettle knob covers a pleasing boost range, just enough to push your amp nicely. It should be marked 104 and be fairly central on the PCB. If you want to alter the volume level of the Fettle side please contact us first to be sure.

There is also a trim in there to make sure the JFET is biased correctly through the entire sweep of the 'Fettle' knob. LEAVE IT ALONE!

If you're maxing out both sides of your Canny Fettle Boost, you are most definitely playing at levels that can damage amps and explode speaker cabs.

Other stuff

Current draw 6 mA

The Canny Fettle Boost takes a standard BOSS style +9VDC 2.1mm centre negative barrel jack power supply. Using the wrong power supply may damage your pedal. Be careful! If in doubt ask first.

Contact us through the website or email us at woolly@championleccy.com if you have any queries.

All Champion Leccy pedals and devices are designed and hand built in Philadelphia.

Find us on



@championleccy